



School No. 2
The Road Forward

2020-2021

Schedule- K-2 Students/Full Day Preschool

Monday - Friday

Drop Off- 8:15-9:00 am

Pick Up- 12:45-1:30 pm

Entry Doors/HIVES

First Floor Classrooms- Green Hive - New Main Entrance

Second Floor Classrooms- Gold Hive- Longhill Road Entrance

Third Floor Classrooms- Black Hive- Blacktop door next to map

Students will receive a laminated colored square on a key ring to keep on their backpacks .

Dismissal Procedures

Parents will line up by their child's hive, **green, black, gold.**

Staff will be placed in each **hive** with walkie talkies.

They will alert the office when parents arrive to pick up.

Students will be dismissed from the same **door/hive** they entered.

Staff will be strategically placed in hallways to guide students.

Parents will indicate on their emergency pick up form an estimated time of pick for each day. They will have three windows to choose from.

12:45-1:00, 1:00-1:15, 1:15-1:30

Bathrooms

Green Hive - First floor bathrooms, no more than two students at a time.

A staff member will be assigned for hallway monitoring. (1)

Black Hive- Third floor bathrooms, one at time. A staff member will be assigned for hallway monitoring. (1)

Gold Hive - Second floor bathrooms, no more than two students at a time. A staff member will be assigned for hallway monitoring. (1)

Total Staff - 3

Snack/Recess

Each Class will receive 15 minutes of snack time inside the classroom and 15 minutes of recess outside (weather permitting). APR may be utilized in inclement weather.

Each Hive will have their breaks within the same time frame.

Half the class will have snack while the other half is at recess.

In Person Schedule-Hybrid Model K

Kindergarten- Example

9:00-9:30- SEL/ Science/Social Studies

9:30-10:30- ELA

10:30-11:00- Snack/Recess

11:00-11:30- Math

11:30- 12:00 Special

12:00-12:30- Math

12:30-12:45- Closing Activities

1:30-3:00- Homework, Independent Practice, Physical
Education activities

In Person Hybrid Schedule- 1&2

Grade 1

9:00- 9:30- SEL/Science/Social Studies

9:30-10:00- Special

10:00-11:00- ELA

11:00-11:30- Snack/Recess

11:30-12:30- Math

12:30-12:45- Closing Activities

**1:30-3:00- Homework, Independent Practice,
Physical Education**

Grade 2

9:00-9:30- SEL/Science/Social Studies

9:30-10:30 -ELA

10:30-11:30- Math

11:30- 12:00- Snack/Recess

12:00-12:30- Special

12:30-12:45- Closing Activities

**1:30- 3:00- Homework, Independent Practice,
Physical Education Activities**

Virtual Schedule-Hybrid Model K

Kindergarten

9:00-9:30- SEL/ Science/Social Studies

9:30-10:30- ELA Small Groups

10:30-11:00- Math Small Group

11:00-11:30- Lunch

11:30- 12:00 Special

12:00-12:30- Math Small Groups

12:30-1:30- Live Small Group Instruction, Independent Practice

1:30-3:00- Homework, Independent Practice, Physical Education

Virtual Hybrid Model- Grades 1 & 2

Grade 1

8:30-9:30- ELA

9:30-10:00- Special

10:00-10:30 - Independent work

10:30-11:00- Math Small Groups

11:00-11:30- Lunch

11:30-12:00- Math Small Group

12:00-12:30 Science/Social Studies/ SEL

12:30-1:00- Independent Practice

1:00-2:30- Homework, Physical Education

Grade 2

8:30-9:30- Independent Practice

9:30-10:30-ELA

10:30-11:00- Independent Work

11:00-11:30 Math small group

11:30- 12:00- Lunch

12:00-12:30- Special

12:30-1:00 Math small group

1:00-1:30 - Science/Social Studies, SEL

1:30-2:30- Homework, Physical Education

Special Area Teachers

In Person Instruction/ Hybrid Model

Special Area Teachers will host virtual classes with in person and virtual students when possible...

- In the event the above is not possible...Each special Area will create monthly units.
- Units will be introduced in person during the shortened school day.
- Check-ins will occur in person during the shortened school day.
- Finished projects will be presented virtually online.

100 % Virtual

- All Special area classes will take place in collaboration with classroom teachers and core subjects.
- Special area teachers will meet live with students every week or every other week.
- Tasks and assignments will be given the week of live instruction and work on the corresponding week.

Virtual Learning K-2 All Subjects

In the event we go 100% virtual we will make the following changes.

- In person Zoom sessions 1-2x a week- whole class. These whole group sessions can be hosted by special area teachers, homeroom teachers, or grade level teachers.
- Small group Zoom sessions- 3 x a day.
- Classes will be divided into 2-3 sections depending on the age, grade, and section.
- ***Teachers will collaborate to make each grade level's virtual learning plan engaging and rigorous.***
- ***Teachers will work together to create an effective and efficient zoom schedule for students, parents, and staff.***

Recommendations for Grade Level Articulation & Distribution - Social Emotional Whole Group Activities (these can be whole homerooms, multi-homerooms, or grade level)

Preschool In Person-Hybrid Model

Full Day Preschool

8:15-9 am Drop off

9:00-12:45 am Instruction

12:45-1:30 Dismissal

Half Day Preschool

8:15-9am Drop off

9-11:30 am Instruction

11:30am Dismissal

Preschool Half Day- Virtual Hybrid Model

Sample Schedule

11:00-11:30 Live/Virtual Integrated Instruction

11:30-1:00 Math/ELA Integrated Studies- Live Instruction

1:00-1:30 Snack/Social and Emotional Learning Activities

Half Day Preschool Schedule- 100% Virtual

The children will be divided into two sessions

AM and PM

Both sessions will receive 2 hours of instruction

Students will be live 2 x during the live instruction

Daily Facility Safety Procedures

All surface areas will be thoroughly cleaned by custodians every hour, beginning right after arrival.

All bathrooms will be cleaned every hour via brew tabs.

Hand Washing- All students will utilize hand sanitizer upon arrival, once inside the classroom hands will be washed with soap and water. Hands will be washed before and after snack and recess. Hand washing and or sanitizer will be utilized by each student if coughing, sneezing, or nose blowing should occur.

First Day of School- Hybrid Model

Kindergarten Students Only

8:00-8:30 Arrival

3 Photo Stations will be set up for parents to take photos outside

Preschool, Grade 1, and Grade 2

8:30-9:00 am Arrival

Virtual Sections- Virtual Teachers will communicate directly with students on a plan create virtual first day celebrations.

Parent Communication

Summer Letter from Mrs. Castaldo

Theme, FAQ Sheet, Class Assignment

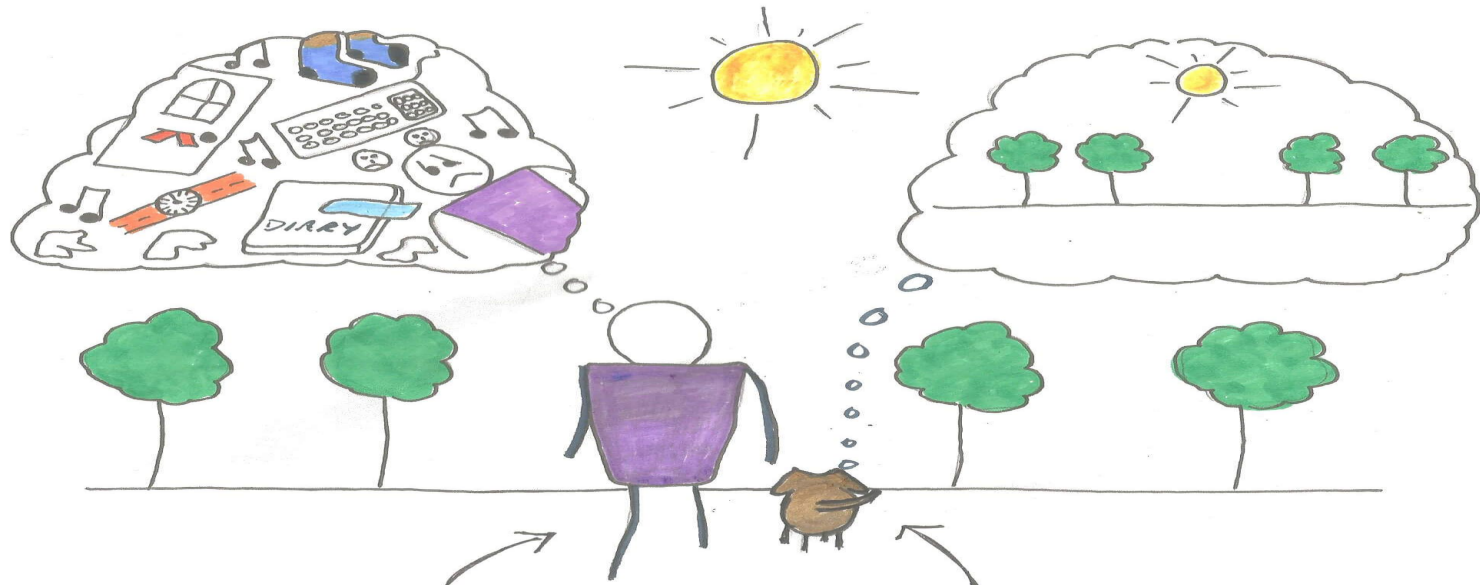
Summer Letters from classroom teachers

Supply lists on website

Video - Mrs. Castaldo

Supply example, FAQ Sheet, Theme project
example

Mind FULL or Mindful?



Mind Full, or Mindful ?

District Theme...BE

BE....

Present

Proud

Calm

Creative

Mindful